

Network

Positioning

# TNU-6322ER

2MP Explosion-proof Camera



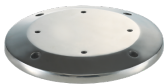
## Key Features

- Max. 2MP (1920 x 1080) resolution
- H: 61.8(Wide)~2.19(Tele) / V: 36.2(Wide)~1.24(Tele) Field of View
- Max. 60fps@2MP (H.265, H.264)
- H.265, H.264, MJPEG codec, WiseStream II
- IR viewable length 200m
- Day & Night (Auto ICR), WDR (120dB)
- Pan/Tilt : 0.5/sec ~80/sec, Endless rotation, Preset (300ea)
- Explosion-proof certificate: IECEX, ATEX, KCs, PESO
- Stainless 316L, Built-in wiper
- IP67, IK10

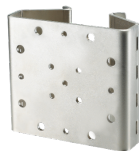
## Compatible Accessories (Optional)



SBE-100WM



SBE-100B



SBE-100PM

# TNU-6322ER

2MP Explosion-proof Camera



## Specifications

### Video

Imaging Device	1/2.8" CMOS
Resolution	1920x1080, 1280x1024, 1280x960, 1280x720, 1024x768, 800x600, 800x448, 720x576, 720x480, 640x480, 640x360, 320x240
Max. Framerate	H.265/H.264: Max. 60fps/50fps(60Hz/50Hz) MJPEG: Max. 30fps/25fps(60Hz/50Hz)
Min. Illumination	Color: 0.05Lux(F1.6, 1/30sec) BW: 0.005Lux(F1.6, 1/30sec), 0Lux(IR LED on)

### Lens

Focal Length (Zoom Ratio)	4.44~142.6mm(32x) zoom
Max. Aperture Ratio	F1.6(Wide)~F4.4(Tele)
Angular Field of View	H: 61.8(Wide)~2.19(Tele) / V: 36.2(Wide)~1.24(Tele)
Min. Object Distance	Wide 1.5m, Tele 2m
Focus Control	Oneshot AF
Lens Type	DC auto iris

### Pan / Tilt / Rotate

Pan Range	360 Endless
Pan Speed	0.5/sec ~80/sec
Tilt Range	180(-90 ~90)
Tilt Speed	0.1/sec ~60/sec
Sequence	Preset(300ea), Swing, Group(6ea), Trace, Tour, Auto Run, Schedule
Preset Accuracy	±0.25

### Operational

Camera Title	Displayed up to 85 characters
Direction Indicator	Support
Day & Night	Auto(ICR)
Backlight Compensation	BLC, HLC, WDR, SSSR
Wide Dynamic Range	120dB
Digital Noise Reduction	SSNR V
Digital Image Stabilization	Support
Defog	Support
Motion Detection	8ea, 8point polygonal zones
Gain Control	Low / Middle / High
White Balance	ATW / AWC / Manual / Indoor / Outdoor
Electronic Shutter Speed	Minimum / Maximum / Anti flicker (1~1/12,000sec)
Analytics	Defocus detection, Directional detection, Fog detection, Face detection, Motion detection, Appear/Disappear, Enter/Exit, Loitering, Tampering, Virtual line, Audio detection
Alarm I/O	Input 1ea / Output 1ea
Alarm Triggers	Analytics, Network disconnect, Alarm input
Alarm Events	File upload via FTP and e-mail Notification via e-mail NAS recording at event triggers Alarm output PTZ Preset

<b>Audio In</b>	Selectable(mic in/line in) Supply voltage: 2.5VDC(4mA), Input impedance: 2K Ohm
<b>Audio Out</b>	Line out, Max.output level: 1Vrms
<b>IR Viewable Length</b>	200m
<b>Water Removal</b>	Support (with Wiper)

## Network

<b>Ethernet</b>	RJ-45 (10/100BASE-T)
<b>Video Compression</b>	H.265/H.264: Main/Baseline/High, MJPEG
<b>Audio Compression</b>	G.711 u-law /G.726 Selectable G.726(ADPCM) 8KHz, G.711 8KHz G.726: 16Kbps, 24Kbps, 32Kbps, 40Kbps AAC-LC: 48Kbps at 16KHz
<b>Smart Codec</b>	Manual(5ea area), WiseStream II
<b>Bitrate Control</b>	H.264/H.265: CBR or VBR MJPEG: VBR
<b>Streaming</b>	Unicast(20 users) / Multicast Multiple streaming(Up to 10 profiles)
<b>Protocol</b>	IPv4, IPv6, TCP/IP, UDP/IP, RTP(UDP), RTP(TCP), RTCP,RTSP, NTP, HTTP, HTTPS, SSL/TLS, DHCP, FTP, SMTP, ICMP, IGMP, SNMPv1/v2c/v3(MIB-2), ARP, DNS, DDNS, QoS, PIM-SM, UPnP, Bonjour
<b>Security</b>	HTTPS(SSL) login authentication Digest login authentication IP address filtering User access log 802.1X authentication(EAP-TLS, EAP-LEAP)
<b>Application Programming Interface</b>	ONVIF Profile S/G/T SUNAPI(HTTP API) Wisenet open platform

## General

<b>Webpage Language</b>	English, Korean, Chinese, French, Italian, Spanish, German, Japanese, Russian, Swedish, Portuguese, Czech, Polish, Turkish, Dutch, Hungarian, Greek
<b>Memory</b>	1024MB RAM, 256MB Flash

## Environmental & Electrical

<b>Operating Temperature / Humidity</b>	-40°C~+60°C(-40°F ~ +140°F) / Less than 95% RH
<b>Storage Temperature / Humidity</b>	-30°C~+60°C(-22°F ~ +140°F) / Less than 95% RH
<b>Certification</b>	IECEX, ATEX, KCs, KC, CE IP67, IK10, PESO certified
<b>Input Voltage</b>	24VAC
<b>Power Consumption</b>	24VAC: Max. 99W (Camera) 24VAC: Max. 50W (IR)

## Mechanical

<b>Color / Material</b>	Metalic Silver / Stainless 316L
<b>Product Dimensions / Weight</b>	611(W)x438(H)x235(D)mm(24.06x17.24x9.25"), 36kg(79.37lb)

# TNU-6322ER

2MP Explosion-proof Camera



CAD

Unit: mm [inch]

